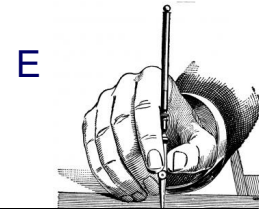
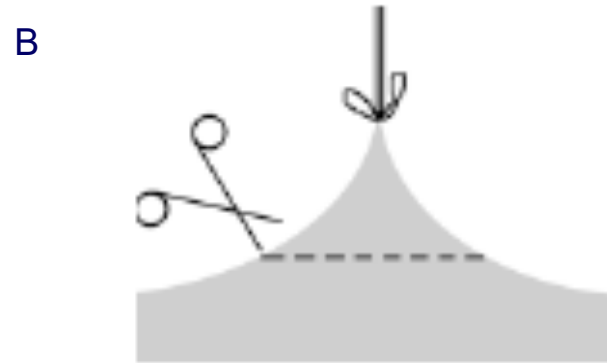
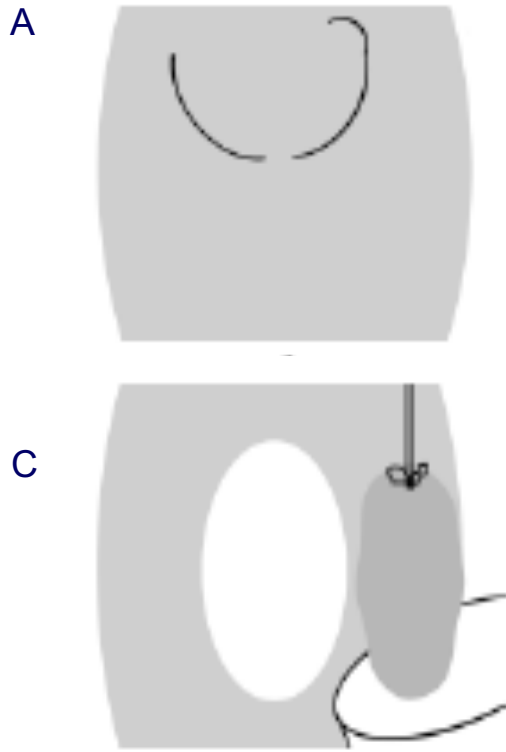


# Trauma free removal and orientation of parietal peritoneum

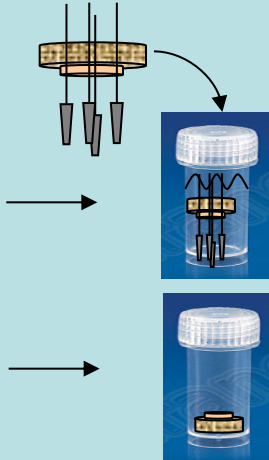
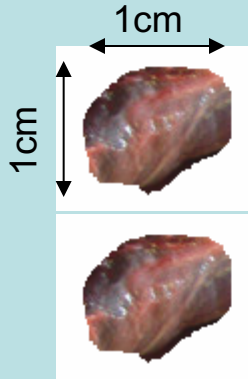
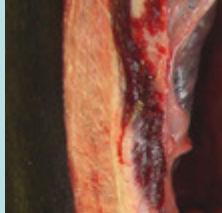


PD BIOPSY STUDY  
Center:  
Pat-ID:  
Date of biopsy:

- (A) Insertion of suture
- (B) Tenting of tissue
- (C) Excision (down to the muscle fascia for determination of peritoneal thickness)
- (D) Put one sample on cork (no needles) with mesothelium uppermost, transfer into liquid nitrogen (dry ice).  
Pin second sample on cork with mesothelium uppermost and store in formalin.
- (E) Label tubes with patient's ID number and date of biopsy (permanent marker).  
For storage see next slide

# Biopsy Sampling / Storage / Transport

## Parietal peritoneal tissue



## Storage

Buffered Formalin 4 %  
fixed on cork; **store at 4°C**

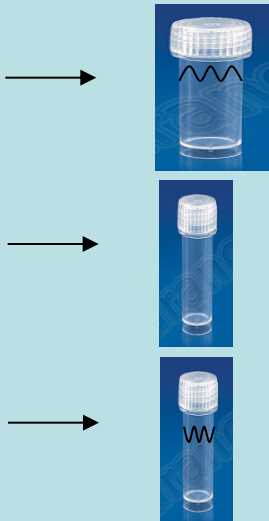
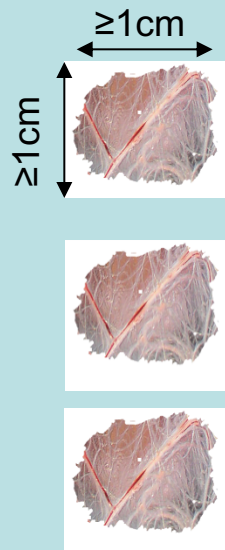
Put in liquid nitrogen  
(dry ice) **store at -80°C**

## Transport to Heidelberg

Room temperature

Dry ice

## Omental tissue



Buffered Formalin 4 %  
**store at 4°C**

Put in liquid nitrogen  
(dry ice) **store at -80°C**

RNA later (2.5 ml)  
**store at 4°C for ≥ 24h (up to 30 days), then at ≤ -20°C**

Room temperature

Dry ice

4°C/dry ice

# Blood and Dialysate Sampling

## 1) Serum



newborns (1ml) – children (5ml)

## Centrifugation

(2000 g, 10 min, 20°C)

## 2) EDTA



newborns (1ml) – children (5ml)

## No centrifugation

## 3) Dialysate



(5ml, please indicate origin of dialysate: 2h/4h PET, 24h dialysate)

Store all samples at  $\leq -20$  ( $-80^{\circ}\text{C}$ , if possible)

Transport to Heidelberg on dry ice

# Patient data entry

---

Please enter patient data in the registry

<http://www.pedpd.org>

Thank you!!!

# Contact

---

[betti.schaefer@med.uni-heidelberg.de](mailto:betti.schaefer@med.uni-heidelberg.de)

tel.: +49622156 36294

[claus.peter.schmitt@med.uni-heidelberg.de](mailto:claus.peter.schmitt@med.uni-heidelberg.de)

tel.: +49622156 39313

[maria.bartosova@med.uni-heidelberg.de](mailto:maria.bartosova@med.uni-heidelberg.de)

tel.:+49622156 35267

Address:

Dr. med. Betti Schaefer / Dr. sc. hum. Maria Bartosova  
Nephrologisches Labor  
Center for Pediatric and Adolescent Medicine  
Im Neuenheimer Feld 430  
D-69120 Heidelberg  
Germany